

**CO SCI 290** (UC:CSU) 3.00 UNITS

**PROGRAMMING IN JAVA**

0553	lec	1:30pm-2:35pm	T Th	SHERAN, H J	E7 405
&	lab	2:35pm-3:40pm	T Th	SHERAN, H J	E7 405
4435	lec	4:45pm-6:50pm	M	DEHKHODA, A	E7 318
&	lab	6:50pm-8:55pm	M	DEHKHODA, A	E7 318

**Evening Classes**

3357	lec	5:50pm-7:55pm	T	KHOLLESI, B	E7 315
&	lab	7:55pm-10:00pm	T	KHOLLESI, B	E7 315

**Cooperative Education, Occupational**

**Cooperative Education Instructor:**

**JR Benavides (323) 415-5386**

*Prerequisite: Employment related to Occupational Major: Must be enrolled in at least 7 units (includes Coop Ed).*

**WHAT IS COOPERATIVE WORK EXPERIENCE EDUCATION?**

This program allows students to earn college units for they're on the job learning experience. (CWEE) combines on the job experience with regular classroom instruction. It is designed to expand skills and knowledge and to improve self-understanding by integrating classroom study with planned supervised work experience. (SEE COLLEGE CATALOG FOR FURTHER INFORMATION)

**COOPERATIVE EDUCATION - WORK EXPERIENCE IN YOUR MAJOR - 3 - 4 UNITS**

15 TO 19 HOURS PER WEEK OF WORK EXPERIENCE 3 UNITS

20 OR MORE HOURS PER WEEK OF WORK EXPERIENCE 4 UNITS

1. MUST attend only ONE orientation meeting DURING FIRST TWO WEEKS of semester.
2. Attend third and fourth week class meetings to set work goals.
3. Meet individually once more with instructor to finalize work goals

Must attend only one of the following Orientation Meeting during first two weeks of the semester. Orientations will follow the schedule listed below. Thereafter, go to F7 120.

**Wednesday, 12:10 - 1:10 p.m., F7 116**

**12:10 - 1:10 p.m., 5:30 - 6:50 p.m., F7 116**

**First Saturday of the semester only: 9:00 - 1:00 p.m., F7 119**

**ADMINISTRATION OF JUSTICE 931** (3) CSURpt 3

**Cooperative Education - Administration of Justice**

9003	3:10-Hrs TBA	W D	Posner	C2 4B
------	--------------	-----	--------	-------

**ADMINISTRATION OF JUSTICE 941** (4) CSURpt 3

**Cooperative Education - Administration of Justice**

9003	4:15-Hrs TBA	W D	Posner	C2 4B
------	--------------	-----	--------	-------

**CHILD DEVELOPMENT 931** (3) CSURpt 3

**Cooperative Education - Child Development**

9010	3:10-Hrs TBA	BENAVIDES, J R	F7 120
------	--------------	----------------	--------

**CHILD DEVELOPMENT 941** (4) CSURpt 3

**Cooperative Education - Child Development**

9011	4:15-Hrs TBA	BENAVIDES, J R	F7 120
------	--------------	----------------	--------

**Dance**

SEE PHYSICAL EDUCATION/DANCE

**Drama**

SEE THEATER ARTS

**Earth Science**

**EARTH SCIENCE 001** (UC:CSU) 3.00 UNITS

**EARTH SCIENCE**

*Note: Earth Science students are eligible to take Earth Science 2 laboratory for additional physical science credit.*

0571	lec	7:25am-8:50am	T Th	MIRETTI, D L	A2 103
0572	lec	9:00am-10:25am	T Th	GRIMMER, J C	A2 104
0573	lec	10:35am-12:00pm	M W	WEST, R B	A2 104
0574	lec	1:55pm-3:20pm	T Th	KOLETTY, S R	A2 103
0577	lec	9:00am-10:25am	M W	WEST, R B	A2 104
3384	lec	3:30pm-4:55pm	M W	GRIMMER, J C	A2 104

**Evening Classes**

3383	lec	6:50pm-10:00pm	W	ADSIT, R J	A2 104
6039	lec	6:50pm-10:00pm	T	GODOY, O	*SGEC 107

*\*South Gate Educational Center  
2340 Firestone Blvd., South Gate, CA 90280*

**EARTH SCIENCE 002** (UC:CSU) 2.00 UNITS

**EARTH SCIENCE LABORATORY**

*Corequisite: Earth Science 1.*

*Note: Credit given for only one of Earth Science 2 or Geology 6.*

0575	lec	10:35am-11:05am	T Th	GRIMMER, J C	A2 104
&	lab	11:05am-12:00pm	T Th	GRIMMER, J C	A2 104
0576	lec	1:55pm-2:25pm	M W	GRIMMER, J C	A2 104
&	lab	2:25pm-3:20pm	M W	GRIMMER, J C	A2 104
6040	lec	3:30pm-4:35pm	T	SMITH, L S	*SGEC 107
&	lab	4:35pm-6:40pm	T	SMITH, L S	*SGEC 107

*\*South Gate Educational Center  
2340 Firestone Blvd., South Gate, CA 90280*

**Evening Classes**

3385	lec	6:50pm-7:55pm	Th	TARNOFF, S R	A2 104
&	lab	7:55pm-10:00pm	Th	TARNOFF, S R	A2 104

**Economics**

**ECONOMICS 001** (UC:CSU) 3.00 UNITS

**PRINCIPLES OF ECONOMICS I**

*Prerequisite: Math 125.*

*Note: Economics 2 may be taken before Economics 1.*

0587	lec	7:25am-8:50am	T Th	CABALLES, A Z	F7 213
0588	lec	10:35am-12:00pm	T Th	DIETER, R	F7 213
0591	lec	9:00am-10:25am	M W	CABALLES, A Z	F7 213
0592	lec	12:10pm-1:35pm	M W	CABALLES, A Z	F7 213
3396	lec	3:30pm-6:40pm	T	DIETER, R	F7 213
4448	lec	3:30pm - 6:50pm	Th	DIETER, R	F7 213

**Evening Classes**

3398	lec	6:50pm-10:00pm	W	STAFF	F7 213
3400	lec	6:50pm-10:00pm	M	STAFF	F7 213

*Economics 001 is also offered through ITV,  
Please see schedule ad on page 116.*

**ECONOMICS 002** (UC:CSU) 3.00 UNITS**PRINCIPLES OF ECONOMICS II**

Prerequisite: Math 125.

Note: Economics 2 may be taken before Economics 1.

0593	lec	1:45pm-3:10pm	M W	DIETER, R	F7 213
0595	lec	7:25am-8:50am	M W	CABALLES, A Z	F7 213
0596	lec	9:00am-10:25am	T Th	CABALLES, A Z	F7 213
0597	lec	10:35am-12:00pm	M W	DIETER, R	F7 213
0598	lec	1:45pm-3:10pm	T Th	CABALLES, A Z	F7 213
3399	lec	3:30pm-6:40pm	W	DIETER, R	F7 213

**Evening Classes**

3401	lec	6:50pm-10:00pm	T	STAFF	F7 213
3402	lec	6:50pm-10:00pm	Th	STAFF	F7 213
6042	lec	6:50pm-10:00pm	Th	STAFF	*SGEC 118

\*South Gate Educational Center  
2340 Firestone Blvd., South Gate, CA 90280

## Education

**EDUCATION 001** (UC:CSU) 3.00 UNITS**INTRODUCTION TO TEACHING****Evening Classes**

3413	lec	6:50pm-10:00pm	T	STAFF	F7 115
------	-----	----------------	---	-------	--------

## Electron Microscopy

**ELECTRON MICROSCOPY 003** 4.00 UNITS**BIOLOGICAL APPLICATIONS OF ELECTRON MICROSCOPY**

Prerequisite: Biology 3 or Biology 6.

0616	lec	1:20pm-3:25pm	W	DOUGLAS, S	B2 114
&	lab	9:00am-1:30pm	S	DOUGLAS, S	G9 209
&	lab	1:50 hrs TBA		DOUGLAS, S	OFF SITE

**ELECTRON MICROSCOPY 018** (CSU) 2.00 UNITS**PHOTOMICROSCOPY**

0617	lec	1:40pm-2:45pm	S	DOUGLAS, S	G9 209
&	lab	2:45pm-5:55pm	S	DOUGLAS, S	G9 209

## Electronics

**ELECTRONICS 120** 9.00 UNITS Rpt 3**A+ CERTIFICATION TRAINING**

0608	lec	8:20am-9:45am	MTWTh	RETIG, D A	E7 302
&	lab	9:45am-12:00pm	MTWTh	RETIG, D A	E7 302

**ELECTRONICS 185** (CSU) 1.00 UNITS Rpt 2**DIRECTED STUDY - ELECTRONICS**

0609	lec	1:05 hrs TBA		RETIG, D A	E7 302
------	-----	--------------	--	------------	--------

## Emergency Department Assistant

**EMERGENCY DEPARTMENT ASSISTANT 009** 4.00 UNITS**EMERGENCY DEPARTMENT ASSISTANT/FIRST RESPONDER**

3447	lec	3:30pm-6:40pm	W	PITTMAN, C L	C2 127C
&	lab	6:50pm-10:00pm	W	PITTMAN, C L	C2 127C

## Engineering Graphics & Design

**ENGINEERING GRAPHICS & DESIGN 101** (UC:CSU) 3.00 UNITS**ENGINEERING GRAPHICS**

0627	lec	9:00am-11:05am	T	DAVIDIAN, A M	E7 105
&	lab	9:00am-11:05am	Th	DAVIDIAN, A M	E7 105

**ENGINEERING GRAPHICS & DESIGN 111** (UC:CSU) 2.00 UNITS**2-D COMPUTER-AIDED DRAFTING WITH AUTOCAD**

Corequisite: Engineering Graphics &amp; Design 101

1815	lec	3:10pm-4:15pm	T Th	DAVIDIAN, A M	E7 101
&	lab	4:15pm-6:25pm	T Th	DAVIDIAN, A M	E7 101

(8 Week Class - Starts 2/4/2013, Ends 3/26/2013)

**ENGINEERING GRAPHICS & DESIGN 121** (CSU) 2.00 UNITS**3-D COMPUTER-AIDED DESIGN WITH SOLIDWORKS**

Prerequisite: Engineering Graphics & Design 111 or Engineering Graphics & Design 112 An introductory course in Three-Dimensional Computer-Aided Design utilizing SolidWorks 3-D software.

1877	lec	3:10pm-4:15pm	T Th	DAVIDIAN, A M	E7 101
&	lab	4:15pm-6:20pm	T Th	DAVIDIAN, A M	E7 101

(8 Week Class - Starts 4/8/2013, Ends 5/31/2013)

## Engineering, Civil

**ENGINEERING, CIVIL 221** (UC:CSU) 3.00 UNITS**PLANE SURVEYING II**

Prerequisite: Civil Engineering 121 &amp; 122.

Advisory: Civil Engineering 222 should be taken concurrently. OFFERED SPRING SEMESTER ONLY.

0619	lec	8:50am-12:00pm	F	GALLEGOS, H A	E7 105
1744	lec	8:50am-10:55am	F	GALLEGOS, H A	E7 105
&	lab	10:55am-2:05pm	F	GALLEGOS, H A	E7 105

## Engineering, Electrical

**ENGINEERING, ELECTRICAL 220** (UC:CSU) 4.00 UNITS**ELECTRICAL CIRCUITS I**

Prerequisite: Math 263, Physics 3 and GE 102.

Corequisite: MATH 275.

Note: Students are required to register in GE 185, section 3460.

Note: EET 120 is a recommended prerequisite for students who have not had previous circuit experience. Required of all Engineering students. A first course in electrical engineering for Engineering students. Consists of lecture, hands-on circuit design lab, and LabVIEW. OFFERED SPRING SEMESTER ONLY.

**Evening Classes**

3458	lec	4:05pm-6:40pm	M	RAMIREZ, J C	E7 101
&	lab	4:30pm-6:35pm	W	RAMIREZ, J C	E7 101
&	lec	4:05pm-4:30pm	W	RAMIREZ, J C	E7 101

**ENGINEERING, ELECTRICAL 225** (UC:CSU) 4.00 UNITS**DIGITAL CIRCUIT ANALYSIS**

Prerequisite: Mathematics 262 and Physics 3.

Note: Consist of lecture, hands-on circuit design and LabVIEW. OFFERED SPRING SEMESTER ONLY.

**Evening Classes**

3464	lec	6:50pm-10:00pm	M	RAMIREZ, J C	E7 101
&	lab	6:50pm-10:00pm	W	RAMIREZ, J C	E7 101



## Engineering, General

### ENGINEERING, GENERAL 101 (UC:CSU) 2.00 UNITS INTRODUCTION TO SCIENCE, ENGINEERING AND TECHNOLOGY

Note: Required of all Engineering, Engineering Technology, Production Technology, CAD and CADD Certificate students. Preview of the engineering and technology professions. This informative course includes presentations from experts in the fields of Engineering and Technology and even earns you two units of General Education in the 'Natural Sciences' section for the 'Natural Sciences' Degree

Note: This course is open to high school students for concurrent enrollment.

**Evening Classes**  
3459 lec 6:50pm-8:55pm T RAMIREZ, J C E7 106

### ENGINEERING, GENERAL 102 (CSU) 2.00 UNITS ENGINEERING PROBLEM SOLVING

Prerequisite: Math 115.

Note: Required of most Engineering, Engineering Technology, Production Technology, CAD and CADD students transferring to CSULA, Cal Poly Pomona, and USC. Highly recommended for all Engineering and Technology students as a technical elective preparatory course for Engineering and Technology classes requiring written reports and computer programming.

Note: This course is open to high school students for concurrent enrollment.

0622 lec 12:50pm-1:55pm T GALLEGOS, H A E7 101  
& lab 1:55pm-3:00pm T GALLEGOS, H A E7 101  
& lab 12:55pm-3:00pm Th GALLEGOS, H A E7 101

### ENGINEERING, GENERAL 131 (UC:CSU) 3.00 UNITS STATICS

Prerequisite: Physics 1. Corequisite: Math 262.

Note: This core course is required for all Engineering students transferring to all universities, including: UCLA, CSULA, USC, Cal Poly Pomona, CSULB, UCI, UCR and others.

0623 lec 12:30pm-1:35pm T Th DAVIDIAN, A M E7 105  
& lab 1:35pm-3:00pm T Th DAVIDIAN, A M E7 105

### ENGINEERING, GENERAL 185 (CSU) 1.00 UNITS Rpt 2

#### DIRECTED STUDY - ENGINEERING, GENERAL

Note: This course is only for students enroll in EE 220.

3460 lec 3:30pm-4:00pm M W RAMIREZ, J C E7 101

### ENGINEERING, GENERAL 212 (UC:CSU) 3.00 UNITS Rpt 3

#### CADD FOR ENGINEERS II

(UC credit limit: General Engineering 211 and 212 combined, maximum credit one course).

Prerequisite: General Engineering 211.

Note: Required of all CAD and CADD Certificate students. Required of most Production Technology students transferring to CSULA. Solid works software is used with rapid prototyping.

0624 lec 12:10pm-1:15pm M KHASHAYAR, K E7 101  
& lab 1:15pm-3:20pm M KHASHAYAR, K E7 101  
& lab 12:10pm-3:20pm W KHASHAYAR, K E7 101

### ENGINEERING, GENERAL 221 (UC:CSU) 3.00 UNITS

#### ENGINEERING PROBABILITY AND STATISTICS

(UC credit limit: General Engineering 221 combined with Mathematics 227, maximum credit one course).

Prerequisite: Math 261.

Note: Required of Civil Engineering and Mechanical Engineering students transferring to CSULA, and Industrial/Systems Engineering students transferring to USC. Also for all CSULA Production Technology students. Lecture plus computer applications to statistics. OFFERED SPRING SEMESTER ONLY!

**Evening Classes**  
3466 lec 6:50pm-10:00pm Th STAFF E7 105

### ENGINEERING, GENERAL 231 (UC:CSU) 3.00 UNITS

#### DYNAMICS

Prerequisite: GE 131.

Note: Required of all Aerospace, Biomedical-Mechanical, Civil, and Mechanical Engineering majors transferring to USC or CSULA. This core course is also required of all Engineering students transferring to Cal Poly Pomona and UCLA, and most engineering options at UCI. This course is second in a sequence in engineering mechanics. Lecture plus computer applications.

0625 lec 9:00am-10:05am M W KHASHAYAR, K E7 105  
& lab 10:05am-11:30am M W KHASHAYAR, K E7 105

### ENGINEERING, GENERAL 241 (UC:CSU) 3.00 UNITS

#### STRENGTH OF MATERIALS

Prerequisite: General Engineering 131.

Note: Required of most Engineering students transferring to CSULA, USC, Cal Poly Pomona, UCLA, UCI, UCR, CSULB, and other universities. Highly recommended for all other Engineering students. OFFERED SPRING SEMESTER ONLY.

**Evening Classes**  
3462 lec 4:10pm-5:15pm T Th GALLEGOS, H A E7 105  
& lab 5:15pm-6:40pm T Th GALLEGOS, H A E7 105

## Industrial Technology

### INDUSTRIAL TECHNOLOGY 105 (CSU) 3.00 UNITS

#### INDUSTRIAL PRINT READING

Prerequisite: General Engineering 212.

3467 lec 3:30pm-5:35pm M KHASHAYAR, K E7 105  
& lab 3:30pm-5:35pm W KHASHAYAR, K E7 105

## Manufacturing & Industrial Technology

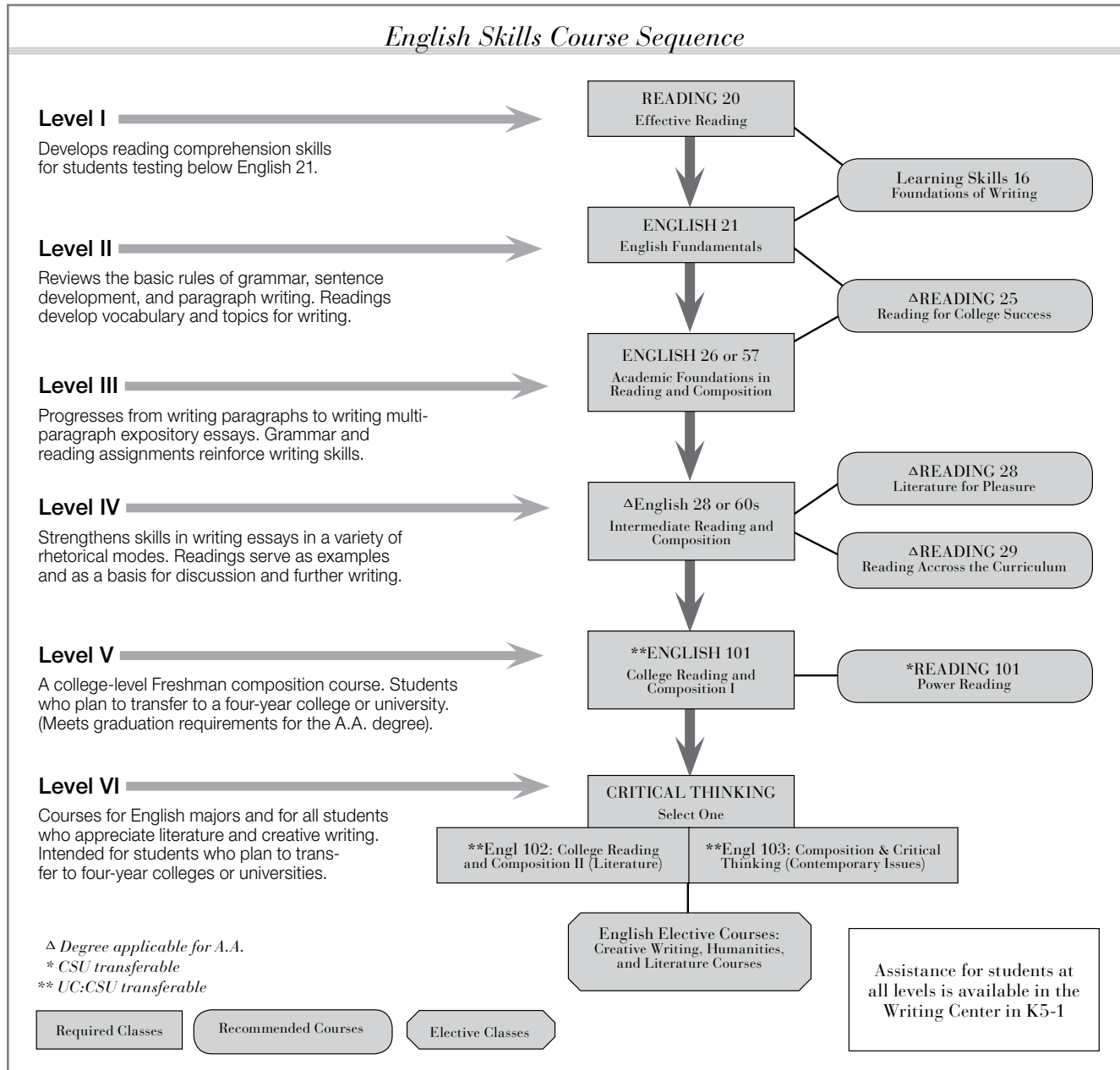
### M & IT 220 (CSU) 3.00 UNITS

#### INTRODUCTION TO ROBOTICS

0626 lec 8:00am-10:05am S STAFF E7 101  
& lab 10:05am-12:10pm S STAFF E7 101

# English

Note: English as a Second Language courses immediately follow regular English course listings. Humanities, Learning Skills, and Reading course listings follow the new ESL section.



## ENGLISH TUTORING

The Writing Center, located in F5-104, offers tutoring, word processing, and Internet access for students in all disciplines. Students may improve their writing and thinking skills through one-on-one tutoring sessions, group workshops, and grammar assistance programs. Walk-in and scheduled appointments are available; students are also welcome to our Conversation Lab where they can improve their listening and speaking skills in a relaxed environment.

## THE WRITING CENTER HOURS ARE:

Monday – Wednesday	7:00 a.m. – 9:00 p.m.
Thursday	7:00a.m. – 7:00 p.m.
Friday & Saturday	10:00 a.m. - 4:00 p.m.



**BASIC SKILLS 067CE** (NDA) 0.00 UNITS Rpt 9

**SUPERVISED ENGLISH TUTORING**

8741	lab	4:15 hrs TBA	HERRERA, G M	F5 BLDG
8940	lab	4:15 hrs TBA	HERRERA, G M	F5 BLDG
8941	lab	4:15 hrs TBA	HERRERA, G M	F5 BLDG
8942	lab	4:15 hrs TBA	HERRERA, G M	F5 BLDG

In order to enroll in one of the English Composition Sequence courses - English 21, 26, 28, 101, 102, or 103 - students must have proof that they have met the prerequisite for that course. This proof may be:

1. an appropriate assessment score,
2. successful completion of the prerequisite course, or
3. prerequisite completion form confirming successful completion of a comparable course at another college. After a computer check by Admissions, students not meeting the prerequisite for the course for which they registered will be administratively dropped.

**ENGLISH 021** (NDA) 3.00 UNITS

**ENGLISH FUNDAMENTALS**

Prerequisite: Acceptable level of skill as demonstrated in the English Placement Process, or satisfactory completion of Reading 20.

Advisory: Reading 25.

Note: This course will be offered on a pass/no-pass basis.

0637	lec	7:25am-8:50am	M W	SANGHA, D K	F9 111
0639	lec	10:35am-12:00pm	M W	SANGHA, D K	F9 113
0640	lec	10:35am-12:00pm	T Th	GODINEZ, P	F9 107
0641	lec	12:10pm-1:35pm	M W	SANGHA, D K	F9 114
0644	lec	7:25am-8:50am	M W	STAFF	F9 109
0696	lec	9:00am-10:25am	T Th	RAMIREZ, N N	F9 107
3473	lec	3:30pm-4:55pm	M W	DODD, N G	B2 101
8023	lec	10:35am-12:00pm	T Th	JOHNS, R L	*SGEC 112
8024	lec	1:45pm-3:10pm	T Th	JOHNS, R L	*SGEC 113
8044	lec	9:00am-12:10pm	F	SHIRINYAN, A A	*SGEC 113

\*South Gate Educational Center  
2340 Firestone Blvd., South Gate, CA 90280

**Evening Classes**

3475	lec	5:15pm-6:40pm	M W	DODD, N G	F9 107
3478	lec	6:50pm-10:00pm	T	ADAMSON, D J	F9 107
3479	lec	6:50pm-10:00pm	W	SANCHEZ, D R	F9 112
3481	lec	6:50pm-10:00pm	Th	ULA, L S	F9 107
6045	lec	5:15pm-6:40pm	T Th	GOLDMAN, A L	*SGEC 112
6046	lec	6:50pm-10:00pm	M	AGREGAN, L A	*SGEC 115
6047	lec	6:50pm-10:00pm	Th	ARMENDAREZ, D M	*SGEC 112

\*South Gate Educational Center  
2340 Firestone Blvd., South Gate, CA 90280

**ENGLISH 026** (NDA) 3.00 UNITS

**ACADEMIC FOUNDATIONS IN READING AND COMPOSITION**

Prerequisite: Acceptable level of skill as demonstrated in the English placement process or satisfactory completion of English 21 or 86 or E.S.L. 6A.

Advisory: Reading 25.

0636	lec	9:00am-12:10pm	S	SHIRINYAN, A A	F9 111
0645	lec	10:35am-12:00pm	T Th	SOLIS, A C	F9 108
0648	lec	7:25am-8:50am	T Th	SANGHA, D K	F9 109
0649	lec	9:00am-10:25am	T Th	SOLIS, A C	F9 113
0650	lec	10:35am-12:00pm	M W	CENTENO, C	F9 111
0651	lec	9:00am-10:25am	M W	ELIAS, L A	F9 113
0652	lec	1:45pm-3:10pm	M W	RAMIREZ, N N	F9 114
0653	lec	1:45pm-3:10pm	T Th	CONCOFF KRONBECK, M E	B2 103
0669	lec	7:25am-8:50am	M W	RAMIREZ, N N	F9 112
0671	lec	9:00am-12:10pm	F	BASALLA, M A	F9 110
1761	lec	1:45pm-3:10pm	T Th	DAHI, K	F9 112
3477	lec	3:30pm-4:55pm	M W	RAMIREZ, N N	F9 111
3484	lec	3:30pm-4:55pm	T Th	SANCHEZ, D R	F9 107
6049	lec	3:30pm-4:55pm	M W	WELSH, H H	*SGEC 112
8014	lec	1:45pm-3:10pm	M W	WELSH, H H	*SGEC 112
8019	lec	9:00am-10:25am	T Th	WELSH, H H	*SGEC 112
8050	lec	1:45pm-3:10pm	T Th	GOLDMAN, A L	*SGEC 112
8082	lec	9:00am-12:10pm	S	DE CASAS, M M	*SGEC 112

\*South Gate Educational Center  
2340 Firestone Blvd., South Gate, CA 90280

**Evening Classes**

3486	lec	5:15pm-6:40pm	T Th	WILLIAMS, J G	F9 107
3487	lec	6:50pm-10:00pm	M	AMADOR, N M	F9 111
3489	lec	6:50pm-10:00pm	W	AMADOR, N M	C2 113
3490	lec	6:50pm-10:00pm	Th	ROMERO, R C	F9 108
4459	lec	6:50pm-10:00pm	M	RUDE, J C	F9 109
6031	lec	5:15pm-6:40pm	M W	HERNANDEZ, M R	*SGEC 112
6050	lec	6:50pm-10:00pm	T	DARR, N M	*SGEC 113
6061	lec	6:50pm-10:00pm	M	KOMNINOS, J	*SGEC 113

\*South Gate Educational Center  
2340 Firestone Blvd., South Gate, CA 90280

**ENGLISH 028** 3.00 UNITS

**INTERMEDIATE READING AND COMPOSITION**

Prerequisite: Acceptable level of skill as demonstrated in the English Placement Process, or Satisfactory completion of English 26 or 57.

Advisory: Reading 28 or 29.

0635	lec	12:10pm-1:35pm	M W	GODINEZ, P	B2 104
0642	lec	1:45pm-3:10pm	M W	GODINEZ, P	C2 124A
0654	lec	7:25am-8:50am	T Th	HENG, N S	F9 110
0655	lec	9:00am-10:25am	T Th	HENG, N S	C2 113
0656	lec	10:35am-12:00pm	M W	MANNONE, D R	F9 112
0657	lec	9:00am-10:25am	M W	BEAULIEU, D E	F9 112
0659	lec	9:00am-10:25am	T Th	SUNTREE, S S	F9 110
0660	lec	1:45pm-3:10pm	T Th	GRAY, J D	F9 113
0665	lec	10:35am-12:00pm	T Th	YOUNGBLOOD, C A	F9 110
0666	lec	12:10pm-1:35pm	M W	RODRIGUEZ, J R	B1 105
0667	lec	1:45pm-3:10pm	M W	RODRIGUEZ, J R	B2 104
0668	lec	1:45pm-3:10pm	T Th	GODINEZ, P	F9 108
0701	lec	9:00am-12:10pm	F	SUNTREE, S S	F9 111
0703	lec	1:45pm-3:10pm	M W	MANNONE, D R	B2 103
0715	lec	1:45pm-3:10pm	M W	SHAHINIAN, A O	B2 106

lec 9:00am-10:25am T Th CENTENO, C F9 114  
This is part of the Adelante Program.  
To enroll, students must see a counselor in B2 107.

1766	lec	12:10pm- 1:35pm	MW	STAFF	F7 115
3491	lec	3:30pm-4:55pm	M W	MANNONE, D R	F9 108
3497	lec	3:30pm-4:55pm	T Th	GRAY, J D	B2 103
3498	lec	3:30pm-4:55pm	T Th	YOUNGBLOOD, C A	F9 108
4458	lec	3:30pm-4:55pm	T Th	GODINEZ, P	F9 114
4463	lec	3:30pm- 6:40pm	T	STAFF	C2 127D
8021	lec	9:00am-12:10pm	S	MORRIS, M H	*SGEC 113
8028	lec	9:00am-10:25am	M W	MUNOZ, E	*SGEC 113
8029	lec	10:35am-12:00pm	M W	MUNOZ, E	*SGEC 113
8030	lec	12:10pm-1:35pm	M W	GRAY, J D	*SGEC 112
8031	lec	1:45pm-3:10pm	M W	GRAY, J D	*SGEC 113

\*South Gate Educational Center  
2340 Firestone Blvd., South Gate, CA 90280

**Evening Classes**

3492	lec	6:50pm-10:00pm	M	RUDE, J C	F9 109
3495	lec	6:50pm-10:00pm	W	BUTMAN, R S	F9 111
3499	lec	5:15pm-6:40pm	M W	SHAHINIAN, A O	C2 113
3500	lec	5:15pm-6:40pm	T Th	DURSO, J K	F9 112
3502	lec	6:50pm-10:00pm	T	BUTMAN, R S	F9 114
3503	lec	6:50pm-10:00pm	Th	LAMAS, C T	F9 111
6051	lec	6:50pm-10:00pm	T	LAMBERT, D E	*SGEC 115
6052	lec	6:50pm-10:00pm	W	LAMBERT, D E	*SGEC 115

\*South Gate Educational Center  
2340 Firestone Blvd., South Gate, CA 90280

**ENGLISH 032** 2.00 UNITS Rpt 3

**COLLEGE LITERARY MAGAZINE EDITING**

0664	lec	12:10pm-2:15pm	W	SOLIS, A C	C2 127C
------	-----	----------------	---	------------	---------

**ENGLISH 033** (NDA) 3.00 UNITS

**BASIC VOCABULARY**

0646	lec	10:35am-12:00pm	T Th	ELIAS, L A	F9 113
------	-----	-----------------	------	------------	--------


**ENGLISH 101** (UC:CSU) 3.00 UNITS

**COLLEGE READING AND COMPOSITION I**

Prerequisite: Acceptable level of skill as demonstrated in the English Placement Process, or satisfactory completion of English 28, 61, 62, 63 or 65.

Advisory: Reading 101.

0662 lec 1:45pm-3:10pm M W ANDRADE, K A B2 108  
 0683 lec 7:25am-8:50am M W CANO, I D F9 108

1666 lec 9:00am-10:25am M W ROMO, A R F9 111  
*This is part of the GE Project – PRESTIGE Program.  
 To enroll, students must see a counselor in E1 127*

0685 lec 9:00am-10:25am M W CARLOS, M D F9 107  
 0687 lec 9:00am-10:25am T Th MANNONE, D R B2 101  
 0688 lec 1:45pm-3:10pm M W DE CASAS, M M C2 122  
 0689 lec 12:10pm-1:35pm M W YOUNGBLOOD, C A B2 106  
 0691 lec 12:10pm-1:35pm M W CONCOFF KRONBECK, M E B2 103  
 0692 lec 1:45pm-3:10pm M W GEOPPO, P A C2 113  
 0693 lec 1:45pm-3:10pm T Th GURFIELD, J F9 109  
 0694 lec 10:35am-12:00pm M W YOUNGBLOOD, C A B2 104  
 0706 lec 9:00am-12:10pm F PHILLIPS, L K F9 107  
 0710 lec 9:00am-12:10pm S ANDREWS, C J F9 107  
 0711 lec 9:00am-12:10pm S ROCK, C F9 112  
 0712 lec 9:00am-12:10pm U MISSAKIAN, I V F9 107  
 0721 lec 10:35am-12:00pm M W CARLOS, M D F9 110

1426 3:10 hrs TBA MUNOZ, E ON LINE  
 1437 3:10 hrs TBA MUNOZ, E ON LINE  
*For up-to-date information on this and other online courses,  
 please check the website, <http://www.online.elac.edu>.*

1606 lec 9:00am-10:25am T Th SANGHA, D K F9 112  
*This is part of ELAC Honors Program.  
 This class is limited to Honors students only*

lec 1:45pm-3:10pm T Th CARLOS, M D F9 110  
*This is part of the Adelante Program.  
 To enroll, students must see a counselor in B2-107.*

1651 lec 10:35am-12:00pm T Th CENTENO, C B2 111  
*This class is limited to the Puente students only.*

1767 lec 1:45pm-3:10pm MW STAFF F7 111  
 1768 lec 1:45pm-3:10pm TTh STAFF C2 127A  
 3474 lec 3:30pm-4:55pm M W CONCOFF KRONBECK, M E F9 109  
 3514 lec 3:30pm-4:55pm T Th SUNTREE, S S F9 109  
 6053 lec 3:30pm-4:55pm T Th WELSH, H H \*SGEC 115  
 8022 lec 12:10pm-1:35pm M W ROSENBLATT, W E \*SGEC 115  
 8032 lec 9:00am-10:25am M W TIGUE, W B \*SGEC 112  
 8033 lec 10:35am-12:00pm T Th BRADSHAW, B S \*SGEC 113  
 8043 lec 9:00am-12:10pm S PHILLIPS, L K \*SGEC 115  
 8090 lec 1:45pm-3:10pm T Th BRADSHAW, B S \*SGEC 115  
 8091 lec 9:00am-12:10pm F TIGUE, W B \*SGEC 112

\*South Gate Educational Center  
 2340 Firestone Blvd., South Gate, CA 90280

**Evening Classes**

3476 lec 6:50pm-10:00pm Th LEHREN, D H F9 112  
 3480 lec 6:50pm-10:00pm Th STEVENSON, W R B2 106  
 3483 lec 6:50pm-10:00pm W AGREGAN, L A F9 108  
 3513 lec 5:15pm-6:40pm M W GEOPPO, P A F9 109  
 3515 lec 5:15pm-6:40pm T Th HOLLAND, D P F9 108  
 3516 lec 5:15pm-6:40pm T Th ADAMSON, D J F9 111  
 3517 lec 6:50pm-10:00pm M CUSHING, W P F9 114  
 3518 lec 6:50pm-10:00pm T CABRAL, J C F9 112  
 3519 lec 6:50pm-10:00pm T HOLLAND, D P C2 113  
 3520 lec 6:50pm-10:00pm W CUSHING, W P F9 114  
 3530 lec 6:50pm-10:00pm T LAMAS, C T F9 111  
 6032 lec 6:50pm-10:00pm T LEHREN, D H \*SGEC 113  
 6055 lec 6:50pm-10:00pm T ROMERO, R C \*SGEC 118  
 6057 lec 6:50pm-10:00pm Th MORRIS, M H \*SGEC 115

\*South Gate Educational Center  
 2340 Firestone Blvd., South Gate, CA 90280

English 101 is also offered through ITV.  
 Please see schedule ad on page 116.

**ENGLISH 102** (UC:CSU) 3.00 UNITS

**COLLEGE READING AND COMPOSITION II**

Prerequisite: Satisfactory completion of English 101.

Note: Both English 102 and 103 meet the IGETC requirement for critical thinking.

0695	lec	10:35am-12:00pm	M W	CONCOFF KRONBECK, M E	F9 107
0697	lec	12:10pm-1:35pm	M W	DURSO, J K	C2 113
0698	lec	1:45pm-3:10pm	T Th	DURSO, J K	F9 112
8025	lec	12:10pm-1:35pm	M W	WELSH, H H	*SGEC 117

\*South Gate Educational Center  
2340 Firestone Blvd., South Gate, CA 90280

**Evening Classes**

3525	lec	5:15pm-6:40pm	T Th	SANCHEZ, D R	F9 113
3527	lec	6:50pm-10:00pm	W	ULA, L S	B2 103

**ENGLISH 103** (UC:CSU) 3.00 UNITS

**COMPOSITION AND CRITICAL THINKING**

Prerequisite: Satisfactory completion of English 101.

Note: Both English 102 and 103 meet the IGETC requirement for Critical Thinking.

0634	lec	9:00am-12:10pm	U	CHAKHCHIR, Z	F9 109
0663	lec	1:45pm-3:10pm	T Th	BLANDON, R	F9 111
0699	lec	7:25am-8:50am	T Th	RODRIGUEZ, J R	F9 107
0702	lec	10:35am-12:00pm	T Th	RODRIGUEZ, J R	F9 114
0704	lec	12:10pm-1:35pm	M W	BLANDON, R	F9 112
0705	lec	1:45pm-3:10pm	M W	BLANDON, R	F9 112
0717	lec	9:00am-12:10pm	S	CHAKHCHIR, Z	F9 108
0718	lec	9:00am-10:25am	M W	SOLIS, A C	B2 103
0719	lec	9:00am-12:10pm	F	STEVENSON, W R	F9 109

1605	lec	10:35am-12:00pm	T Th	GURFIELD, J	B2 104
------	-----	-----------------	------	-------------	--------

*This is part of ELAC Honors Program.  
This class is limited to Honors students only*

3488	lec	3:30pm-4:55pm	T Th	DURSO, J K	F9 112
3529	lec	3:30pm-4:55pm	M W	JIMENEZ, F	F9 107
3539	lec	3:30pm-4:55pm	T Th	WILLIAMS, J G	B2 106
8034	lec	10:35am-12:00pm	M W	ROSENBLATT, W E	*SGEC 112
8046	lec	9:00am-10:25am	T Th	ANDREWS, C J	*SGEC 113
8047	lec	9:00am-12:10pm	S	LUCERO, D S	*SGEC 114
8110	lec	9:00am-12:10pm	F	KOMNINOS, J	*SGEC 115

\*South Gate Educational Center  
2340 Firestone Blvd., South Gate, CA 90280

**Evening Classes**

3523	lec	6:50pm-10:00pm	M	SHARIFI, A	F9 112
3526	lec	5:15pm-6:40pm	M W	ANDRADE, K A	F9 111
3532	lec	5:15pm-6:40pm	T Th	JOSEPH, S W	F9 110
3533	lec	5:15pm-6:40pm	M W	JIMENEZ, F	F9 110
3534	lec	6:50pm-10:00pm	T	JIMENEZ, F	F9 108
3535	lec	6:50pm-10:00pm	T	JOSEPH, S W	B2 106
3536	lec	6:50pm-10:00pm	W	SHARIFI, A	F9 109
3538	lec	6:50pm-10:00pm	Th	YOSHIDA, G K	F9 110
6038	lec	6:50pm-10:00pm	W	LUCERO, D S	*SGEC 112
6059	lec	6:50pm-10:00pm	M	ARMENDAREZ, D M	*SGEC 112

\*South Gate Educational Center  
2340 Firestone Blvd., South Gate, CA 90280

**ENGLISH 127** (UC:CSU) 3.00 UNITS Rpt 3

**CREATIVE WRITING**

Prerequisite: English 28 or one of the following: English 28, 61, 62, 63, or 65.

Note: Eligibility for English 101 is acceptable.

0709	lec	1:45pm-3:10pm	T Th	SANCHEZ, D R	F9 107
------	-----	---------------	------	--------------	--------

**ENGLISH 204** (UC:CSU) 3.00 UNITS

**WORLD LITERATURE II**

Prerequisite: English 101.

Note: Either English 203 or English 204 may be taken first.

0708	lec	1:45pm-3:10pm	M W	DURSO, J K	F9 113
------	-----	---------------	-----	------------	--------

**ENGLISH 206** (UC:CSU) 3.00 UNITS

**ENGLISH LITERATURE II**

Prerequisite: English 101.

Advisory: English 102 or English 205.

0700	lec	10:35am-12:00pm	T Th	STAFF	B2 106
------	-----	-----------------	------	-------	--------

**ENGLISH 208** (UC:CSU) 3.00 UNITS

**AMERICAN LITERATURE II**

Prerequisite: English 101.

Advisory: English 102.

Note: Either English 207 or English 208 may be taken first.

0686	lec	1:45pm-3:10pm	T Th	SUNTREE, S S	F7 119
------	-----	---------------	------	--------------	--------

**ENGLISH 211** (UC:CSU) 3.00 UNITS Rpt 1

**FICTION**

Prerequisite: English 101.

0713	lec	10:35am-12:00pm	M W	SOLIS, A C	B2 103
------	-----	-----------------	-----	------------	--------

**ENGLISH 215** (UC:CSU) 3.00 UNITS

**SHAKESPEARE I**

Prerequisite: English 101.

Note: Either English 215 or English 216 may be taken first.

**Evening Classes**

3493	lec	5:15pm-6:40pm	T Th	GURFIELD, J	F9 109
------	-----	---------------	------	-------------	--------

**ENGLISH 220** (UC:CSU) 3.00 UNITS

**THE CONTEMPORARY LATIN AMERICAN SHORT STORY**

Prerequisite: English 101.

3501	lec	3:30pm-4:55pm	T Th	CARLOS, M D	F9 110
------	-----	---------------	------	-------------	--------

**ENGLISH 239** (UC:CSU) 3.00 UNITS

**WOMEN IN LITERATURE**

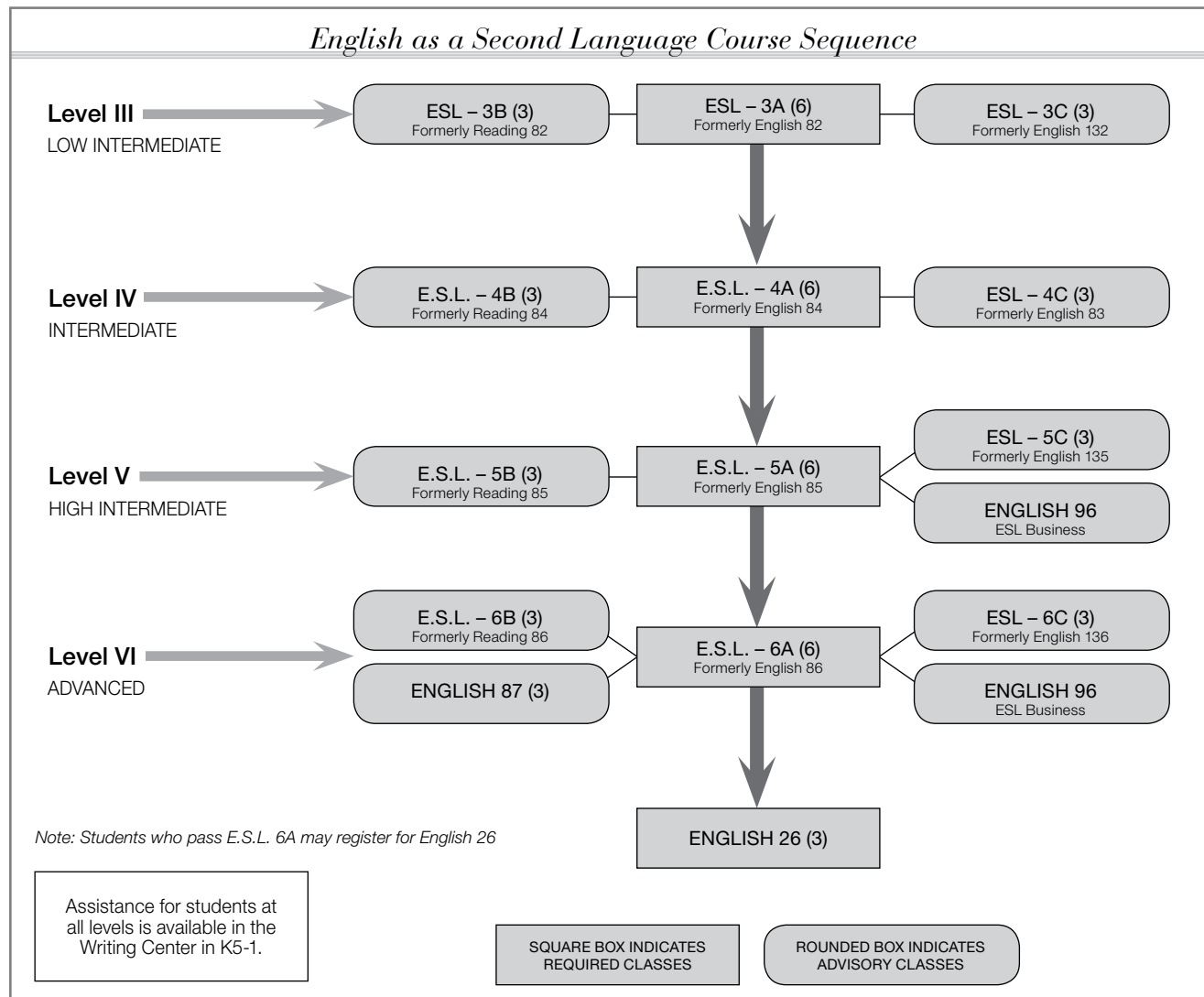
Prerequisite: English 101.

3510	lec	3:30pm-4:55pm	T Th	BLANDON, R	F9 111
------	-----	---------------	------	------------	--------



# English as a Second Language

Note: ESL courses are listed by levels according to ESL course sequence chart.



## ESL Level 3 – Low Intermediate

### ENGLISH AS A SECOND LANGUAGE 003A 6.00 UNITS

#### COLLEGE ENGLISH AS A SECOND LANGUAGE III: WRITING AND GRAMMAR

Advisories: ESL 3B and/or 3C.

0658	lec	12:10pm-3:20pm	M W	CHAN, C	F9 110
0661	lec	9:00am-10:25am	MTWTh	VAN HOUTEN, K W	F9 109
3541	lec	3:30pm-6:40pm	T Th	DE ALAIZA, C H	B2 101

### ENGLISH AS A SECOND LANGUAGE 003B (CSU) 3.00 UNITS

#### COLLEGE ENGLISH AS A SECOND LANGUAGE III: READING AND VOCABULARY

Advisories: ESL 3A and/or 3C.

1256	lec	10:35am-12:00pm	M W	VAN HOUTEN, K W	F9 109
4071	lec	3:30pm-4:55pm	M W	NICOLAIDES, A	F7 119

### ENGLISH AS A SECOND LANGUAGE 003C 3.00 UNITS

#### COLLEGE ENGLISH AS A SECOND LANGUAGE III: LISTENING AND SPEA

Advisories: ESL 3A and/or 3B.

0638	lec	10:35am-12:00pm	T Th	BRIONES, C R	B2 101
------	-----	-----------------	------	--------------	--------

## ESL Level 4 – Intermediate

### ENGLISH AS A SECOND LANGUAGE 004A 6.00 UNITS

#### COLLEGE ENGLISH AS A SECOND LANGUAGE IV: WRITING AND GRAMMAR

Prerequisites: English as a Second Language 3A or English 82 or acceptable level of English as demonstrated in the ESL placement process.

Advisories: ESL 4B and/or 4C.

0673	lec	7:15am-10:25am	M W	WARNER, N J	F9 110
0674	lec	9:00am-12:10pm	T Th	DAHI, K	F9 111
0675	lec	12:10pm-3:20pm	M W	DAHI, K	F9 111

#### Evening Classes

3505	lec	6:50pm-10:00pm	M W	DUFFY, A M	F9 113
------	-----	----------------	-----	------------	--------

### ENGLISH AS A SECOND LANGUAGE 004B 3.00 UNITS

#### COLLEGE ENGLISH AS A SECOND LANGUAGE IV: READING AND VOCABULARY

Advisories: E.S.L. 4A and/or 4C.

1257	lec	7:25am-8:50am	T Th	VAN HOUTEN, K W	F9 108
4067	lec	3:30pm-4:55pm	M W	BEHSETA, S	F9 110



**ENGLISH AS A SECOND LANGUAGE 004C** 3.00 UNITS

**COLLEGE ENGLISH as a SECOND LANGUAGE IV: LISTENING AND SPEAKING**

Prerequisite: Level placement by the ESL assessment or completion of ESL 3C.

Advisories: E.S.L. 4A and/or 4B.

0672	lec	12:10pm-1:35pm	MW	ALLERSON, S L	F9 113
0716	lec	9:00am-12:10pm	F	GONG, L Y	F9 108

*ESL Level 5 – High Intermediate*

**ENGLISH AS A SECOND LANGUAGE 005A** (UC:CSU) 6.00 UNITS

**COLLEGE ENGLISH AS A SECOND LANGUAGE V: WRITING AND GRAMMAR**

Prerequisites: English as a Second Language 4A or English 84 or acceptable level of English as demonstrated in the ESL placement process.

Advisories: E.S.L. 5B and/or ESL 5C.

0676	lec	7:25am-8:50am	MTWTh	COLICCHIO, A	F9 114
0677	lec	9:00am-10:25am	MTWTh	KERFORD, J P	F9 108
0678	lec	12:10pm-3:20pm	MW	SPANGLER, S L	F9 107
3509	lec	3:30pm-6:40pm	MW	CUMMINS, E C	B2 103

**Evening Classes**

3506	lec	6:50pm-10:00pm	T Th	TIRMAN, D J	F9 113
3507	lec	6:50pm-10:00pm	MW	BOYD, A B	F9 110

**ENGLISH AS A SECOND LANGUAGE 005B** (CSU) 3.00 UNITS

**COLLEGE ENGLISH AS A SECOND LANGUAGE V: READING AND VOCABULA**

Advisories: E.S.L. 5A and/or ESL 5C.

1258	lec	10:35am-12:00pm	T Th	CHAN, C	F9 112
4073	lec	3:30pm-4:55pm	T Th	CHAN, C	F9 113

**ENGLISH AS A SECOND LANGUAGE 005C** (CSU) 3.00 UNITS

**COLLEGE ENGLISH as a SECOND LANGUAGE V: LISTENING AND SPEAKING**

Advisories: E.S.L. 5A and/or ESL 5C.

0643	lec	12:10pm-1:35pm	MW	WILEY, R	F9 109
------	-----	----------------	----	----------	--------

**Evening Classes**

3521	lec	5:15pm-6:40pm	T Th	BEHSETA, S	B2 103
------	-----	---------------	------	------------	--------

*ESL Level 6 – Advanced*

**ENGLISH AS A SECOND LANGUAGE 006A** (UC:CSU) 6.00 UNITS

**COLLEGE ENGLISH AS A SECOND LANGUAGE VI: WRITING AND GRAMMAR**

Prerequisite: E.S.L. 5A or English 85 or Acceptable level of English as demonstrated in the ESL placement process.

Advisories: E.S.L. 6B and/or ESL 6C.

0670	lec	10:35am-12:00pm	MTWTh	STAFF	B1 110
0679	lec	7:25am-8:50am	MTWTh	LEE, R C	B2 103
0680	lec	9:00am-12:10pm	T Th	WARNER, N J	B2 103
0681	lec	12:10pm-3:20pm	MW	BEHSETA, S	F9 108

**Evening Classes**

3508	lec	6:50pm-10:00pm	MW	CHEN, L	F9 107
3528	lec	6:50pm-10:00pm	T Th	MORAN, J K	B2 103

**ENGLISH AS A SECOND LANGUAGE 006B** (CSU) 3.00 UNITS

**COLLEGE ENGLISH AS A SECOND LANGUAGE VI: READING AND VOCABULARY**

Advisories: E.S.L. 6A and/or ESL 6C.

0682	lec	1:45pm-3:10pm	MW	KERFORD, J P	F9 109
------	-----	---------------	----	--------------	--------

**ENGLISH AS A SECOND LANGUAGE 006C** (CSU) 3.00 UNITS

**COLLEGE ENGLISH as a SECOND LANGUAGE VI: LISTENING AND SPEAKING**

Advisories: E.S.L. 6A and/or 6B.

3531	lec	3:30pm-4:55pm	T Th	KHIN, T N	B2 104
------	-----	---------------	------	-----------	--------

**Evening Classes**

3494	lec	6:50pm-10:00pm	T	KHIN, T N	B2 104
------	-----	----------------	---	-----------	--------

*Humanities*

**HUMANITIES 001** (UC:CSU) 3.00 UNITS

**CULTURAL PATTERNS OF WESTERN CIVILIZATION**

Advisory: English 101.

0726	lec	10:35am-12:00pm	MW	LANGDELL, C C	B2 112
------	-----	-----------------	----	---------------	--------

**HUMANITIES 060** (UC:CSU) 3.00 UNITS

**PEOPLE AND THEIR WORLD: TECHNOLOGY AND THE HUMANITIES**

Advisory: English 101.

1614	lec	1:45pm-3:10pm	T Th	STAFF	B2 106
------	-----	---------------	------	-------	--------

*This is part of ELAC Honors Program.  
This class is limited to Honors students only*

**Evening Classes**

3694	lec	6:50pm-10:00pm	M	JIMENEZ, F	F9 108
------	-----	----------------	---	------------	--------

*Learning Skills*

**LEARNING SKILLS 016** (NDA) 3.00 UNITS

**FOUNDATIONS OF WRITING**

Note: This course is offered on a pass/no-pass basis only.

0914	lec	10:35am-12:00pm	MW	KERFORD, J P	F9 108
------	-----	-----------------	----	--------------	--------

*Reading*

**READING 020** (NDA) 5.00 UNITS

**EFFECTIVE READING**

Advisory: Learning Skills 16.

Note: This course is offered on a pass/no-pass basis only.

1249	lec	7:50am-10:20am	T Th	SCHERZER, S	F7 224
1250	lec	9:00am-11:30am	MW	SCHERZER, S	F9 114
1251	lec	1:45pm-4:15pm	T Th	SCHERZER, S	F9 114
4065	lec	3:30pm-6:00pm	MW	WILEY, R	F9 114
4068	lec	3:30pm-6:00pm	T Th	WILEY, R	B2 105
6145	lec	3:30pm-6:00pm	T Th	RODRIGUEZ, M A	*SGEC 113

\*South Gate Educational Center  
2340 Firestone Blvd., South Gate, CA 90280

**Evening Classes**

4066	lec	6:50pm-9:20pm	MW	GUNDERSON, M B	B2 104
------	-----	---------------	----	----------------	--------

**READING 025** 3.00 UNITS

**READING FOR COLLEGE SUCCESS**

Advisory: Reading 20.

1247	lec	10:35am-12:00pm	T Th	SCHERZER, S	F9 109
1248	lec	1:45pm-3:10pm	MW	WILEY, R	B2 110
1261	lec	9:00am-12:10pm	S	HOFFERD, R J	F9 110
8123	lec	9:00am-12:10pm	F	DANIELS, G P	*SGEC 117

\*South Gate Educational Center  
2340 Firestone Blvd., South Gate, CA 90280

**READING 029** 3.00 UNITS

**READING ACROSS THE CURRICULUM**

Advisory: Acceptable level of skill as demonstrated in the English Placement Process or English 26 or 57.

1254	lec	7:25am-8:50am	MW	ELIAS, L A	F9 113
1255	lec	7:25am-8:50am	T Th	ELIAS, L A	F9 113

**Evening Classes**

4070	lec	5:15pm-6:40pm	MW	BARILARI, G	F9 112
------	-----	---------------	----	-------------	--------

**READING 101** (CSU) 3.00 UNITS

**POWER READING**

Advisory: English 28 or 29.

1253	lec	9:00am-10:25am	T Th	DANIELS, G P	E7 306
------	-----	----------------	------	--------------	--------

**Evening Classes**

4074	lec	6:50pm-10:00pm	M	BARILARI, G	B2 106
------	-----	----------------	---	-------------	--------

## Environmental Design

THESE COURSES ARE OFFERED THROUGH  
THE DEPARTMENT OF ARCHITECTURE.

### ENVIRONMENTAL DESIGN 101 (UC:CSU) 3.00 UNITS

#### FOUNDATIONS OF DESIGN I

Advisory: Architecture 170.

0207	lec	12:10pm-12:40pm	M W	HAMNER, D M	E7 114
&	lab	12:40pm-3:10pm	M W	HAMNER, D M	E7 114

#### Evening Classes

3550	lec	6:50pm-7:55pm	M	NAVARRO, A J	E7 114
&	lab	7:55pm-10:00pm	M	NAVARRO, A J	E7 114
&	lab	6:50pm-10:00pm	W	NAVARRO, A J	E7 114

### ENVIRONMENTAL DESIGN 102 (CSU) 3.00 UNITS

#### FOUNDATIONS OF DESIGN II

Prerequisite: ENV 101.

Advisory: Architecture 170.

0210	lec	12:10pm-1:15pm	T	NAVARRO, A J	E7 114
&	lab	1:15pm-3:20pm	T	NAVARRO, A J	E7 114
&	lab	12:10pm-3:20pm	Th	NAVARRO, A J	E7 114

## Environmental Science

### ENVIRONMENTAL SCIENCE 001 (UC:CSU) 3.00 UNITS

#### THE HUMAN ENVIRONMENT: PHYSICAL PROCESSES

3556	lec	3:30pm-4:55pm	M W	ADSIT, R J	A2 103
------	-----	---------------	-----	------------	--------

### ENVIRONMENTAL SCIENCE 017 (UC:CSU) 3.00 UNITS

#### GEOGRAPHY OF CALIFORNIA

Note: Credit given for only one of Environmental Science 17 or Geography 14.

0728	lec	10:35am-12:00pm	T Th	MIRETTI, D L	A2 103
------	-----	-----------------	------	--------------	--------

## Family And Consumer Studies

### FAMILY AND CONSUMER STUDIES 021 (UC:CSU) 3.00 UNITS

#### NUTRITION

1414	3:10 hrs TBA	DIXON, D C	ON LINE
For up-to-date information on this and other online courses, please check the website, <a href="http://www.online.elac.edu">http://www.online.elac.edu</a> .			

#1879	lec	9:00am-3:30pm	S	STAFF	F7 117
-------	-----	---------------	---	-------	--------

#(8 Week Class - Starts 4/13/2013, Ends 6/1/2013)

3562	lec	3:30pm-6:40pm	T	STAFF	F7 110
------	-----	---------------	---	-------	--------

#### Evening Classes

3563	lec	6:50pm-10:00pm	W	STAFF	F7 113
------	-----	----------------	---	-------	--------

### FAMILY AND CONSUMER STUDIES 031 (UC:CSU) 3.00 UNITS

#### MARRIAGE AND FAMILY LIFE

(UC credit limit: Maximum credit, one course F&CS 31 or SOC 12)

Note: Credit given for only one of Family and Consumer Studies 31 or Sociology 12.

1415	3:10 hrs TBA	OZUNA, M C	ON LINE
For up-to-date information on this and other online courses, please check the website, <a href="http://www.online.elac.edu">http://www.online.elac.edu</a> .			

#1806	lec	9:00am-5:50pm	S	STAFF	F7 110
-------	-----	---------------	---	-------	--------

#(6 Week Class - Starts 2/9/2013, Ends 3/23/2013)

3574	lec	3:30pm-6:40pm	M	BRIGGS, P T	F7 110
------	-----	---------------	---	-------------	--------

#### Evening Classes

3576	lec	6:50pm-10:00pm	T	HILGER, R D	F7 110
------	-----	----------------	---	-------------	--------

### FAMILY AND CONSUMER STUDIES 034 (CSU) 3.00 UNITS

#### CHILD NUTRITION

1851	lec	9:00am-3:30pm	S	CHUKUMERIJE, J	F7 116
------	-----	---------------	---	----------------	--------

(8 Week Class - Starts 4/13/2013, Ends 6/1/2013)

## Finance

### FINANCE 002 (CSU) 3.00 UNITS

#### INVESTMENTS

3571	lec	3:30pm-6:40pm	M	MANOOCHERI, CM	F7 211
------	-----	---------------	---	----------------	--------

3572	lec	3:30pm-6:40pm	T	HOLGUIN, R T	E7 306
------	-----	---------------	---	--------------	--------

#### Evening Classes

3587	lec	6:50pm-10:00pm	M	ZAND, S	E7 306
------	-----	----------------	---	---------	--------

### FINANCE 008 (CSU) 3.00 UNITS

#### PERSONAL FINANCE AND INVESTMENTS

0737	lec	7:25am-8:50am	T Th	ALDERETE, F J	E7 306
------	-----	---------------	------	---------------	--------

0775	lec	8:00am-11:10am	S	ALDERETE, F J	E7 306
------	-----	----------------	---	---------------	--------

#### Evening Classes

3588	lec	6:50pm-10:00pm	Th	HOLGUIN, R T	E7 306
------	-----	----------------	----	--------------	--------

## Fire Technology

### FIRE TECHNOLOGY 096 (CSU) 8.00 UNITS

#### EMERGENCY MEDICAL TECHNICIAN

Advisory: EDA 9.

Note: Limitation on Enrollment: Pursuant to Title V, Section 58106B, (Health and Safety Considerations), as well as other state regulations, the student must possess a valid certificate of successful completion of the 'Health Care Provider' type CPR course commonly administered by either the Red Cross or the American Heart Association. This certificate must be presented to the instructor the first day the class meets. Course orientation is vitally important; as a result, first day attendance is mandatory, students missing first day of class will be dropped from the course.

#### Evening Classes

3591	lec	5:00pm-9:05pm	T Th	PITTMAN, C L	C2 122B
------	-----	---------------	------	--------------	---------

&	lab	9:05pm-9:45pm	T Th	PITTMAN, C L	C2 122B
---	-----	---------------	------	--------------	---------

3592	lec	5:45pm-10:00pm	F	PITTMAN, C L	C2 122
------	-----	----------------	---	--------------	--------

&	lec	9:00am-12:35pm	S	PITTMAN, C L	C2 122
---	-----	----------------	---	--------------	--------

&	lab	12:35pm-2:00pm	S	PITTMAN, C L	C2 122
---	-----	----------------	---	--------------	--------

### FIRE TECHNOLOGY 201 (CSU) 3.00 UNITS

#### FIRE PROTECTION ORGANIZATION

0741	lec	7:25am-8:50am	M W	HOSEA, J B	C2 122
------	-----	---------------	-----	------------	--------

### FIRE TECHNOLOGY 202 (CSU) 3.00 UNITS

#### FIRE PREVENTION

0742	lec	9:00am-10:25am	T Th	BEARD, M	C2 122
------	-----	----------------	------	----------	--------

### FIRE TECHNOLOGY 203 (CSU) 3.00 UNITS

#### FIRE PROTECTION EQUIPMENT AND SYSTEMS

#### Evening Classes

3593	lec	6:50pm-8:15pm	T Th	MORENO, E J	C2 121
------	-----	---------------	------	-------------	--------

### FIRE TECHNOLOGY 205 (CSU) 3.00 UNITS

#### FIRE BEHAVIOR AND COMBUSTION

0744	lec	12:10pm-1:35pm	M W	HOSEA, J B	C2 122
------	-----	----------------	-----	------------	--------

### FIRE TECHNOLOGY 207 (CSU) 3.00 UNITS

#### WILDLAND FIRE CONTROL

0745	lec	10:35am-12:00pm	M W	HOSEA, J B	C2 122
------	-----	-----------------	-----	------------	--------

### FIRE TECHNOLOGY 209 (CSU) 3.00 UNITS

#### FIRE TACTICS AND STRATEGY

0747	lec	9:00am-10:25am	M W	HOSEA, J B	C2 122
------	-----	----------------	-----	------------	--------

### FIRE TECHNOLOGY 285 (CSU) 2.00 UNITS

#### DIRECTED STUDY - FIRE TECHNOLOGY

3594	2:05 hrs TBA	GUERRA, M C	C2 124B
------	--------------	-------------	---------