

What is Adelante?

The Adelante First Year Experience Program is a comprehensive program that seeks to improve student preparation, retention and transfer through collaboration among instructors, student-tutors, counselor and Adelante staff. The Adelante Program aims to provide students with the necessary academic support to succeed.

Adelante students are placed in academic cohorts where the cohorts range from mathematics, English, science, and Liberal Arts. The Adelante Program involves students services, linked courses, a stimulating learning environment, and committed faculty which together will provide all Adelante first year students with the very best opportunities to succeed in transferring to a four-year university. The Adelante Program is committed to the educational success of students.

BENEFITS:

- Priority enrollment
- Adelante Counselor
- Accurate information on the transfer process
- Expedite the transfer process
- Immediate access to Financial Aid counseling
- Smaller classes
- Inspiring and committed instructors
- Coaches, how-to-study classes
- Visit universities and get advice on how to apply
- Access to computers, academic textbooks and calculators

REQUIREMENTS:

- Commit to the program for one academic year as a full-time ELAC student
- Participate in Adelante activities and events
- Enroll in Adelante classes, held at the main campus
- Qualify for Math 110, 115, 125 or English 26, 28

College Academic Affairs Administration

Ernest H. Moreno, President
VACANT, Vice President, Administrative Service
Renée D. Martinez, Vice President, Workforce Education
Dr. Richard A. Moyer, Vice President, Academic Affairs
Oscar Valeriano, Vice President, Student Services
Jeremy Allred, Dean, Admissions and Records
Gayle Brosseau, Dean, Academic Affairs
Selina Chi, Dean, Institutional Development & Community Relations
Karen Daar, Dean, Academic Affairs
Vi Ly, Dean, Academic Affairs
Kerrin McMahan, Dean, Academic Affairs
Adrienne Ann Mullen, Dean, Continuing Education
Ryan Corner, Associate Dean, Institutional Effectiveness
Laura M. Ramirez, Dean, Academic Affairs
Al Rios, Dean, Academic Affairs/South Gate
Danelle Fallert, Dean, EOP&S
Sonia Lopez, Dean Student Services/ Activities
Dr. John Rude, Associate Dean, Institutional Development
Angelica Toledo, Associate Dean, CalWORKs
Martha Ermias, Assistant Dean, Specially Funded Programs

District Administration

Dr. Tyree Wieder, Interim Chancellor
Dr. Adriana Barrera, Deputy Chancellor
John Clerx, Vice Chancellor
Gary Colombo, Vice Chancellor
Marvin Martinez, Vice Chancellor
Larry H. Eisenberg, Executive Director
Camille A. Goulet, General Counsel
Jeanette Gordon, Chief of Financial Office/Treasure

Board of Trustees

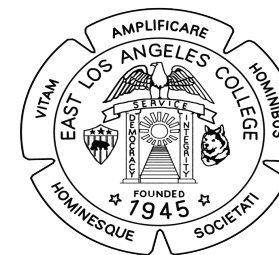
Mona Field, President
Georgia L. Mercer, Vice President
Kelly G. Candaele
Tina Park
Nancy Pearlman
Miguel Santiago
Sylvia Scott-Hayes

East Los Angeles College



Adelante

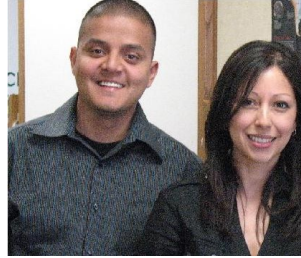
First Year Experience Program



**1301 Avenida Cesar Chavez
Monterey Park, CA 91754**

Student Services

The **Adelante Counselors**, Jessica Peak and Kirby Dominguez joined the Adelante Program in the fall 2009. Prior to ELAC, Jessica taught at an elementary school for nine years. Kirby worked in student services at a community college and university for five years. They meet with students at least twice a semester and are available during the winter and summer sessions; thereby providing students with personal attention to their academic success. They also assist previous Adelante students with their educational goal in transferring to a four year university.



The Adelante Program has collaborated with the Financial Aid office, Transfer Center, Extended Opportunity Program and Services (EOPS), and Mathematics, Engineering, Science and Achievement (MESA) office thereby providing students with accurate and current information regarding financial aid, transfer process, and support systems that are geared to students interest and needs. These programs are designed to assist students in taking the necessary steps in pursuing and achieving their educational goal.

The **Adelante Staff** are helpful and compassionate individuals that assist students with computers, educational resources and general information. They also promote school activities and events. The Adelante staff creates an environment that is conducive to learning and studying for students.



Academics

The **Adelante Instructors** are enthusiastic and inspiring instructors that make the courses interesting. They are dedicated in increasing students' educational performance through collaboration on pedagogical practices. Adelante instructors implement and utilize technology in their courses as a method to teach and deliver content knowledge. Their commitment is student success.



The Adelante Program provides Adelante students with **Supplemental Instruction (SI)**. SI are study sessions with an experienced student who excelled in the subject matter. The experienced student (SI Coach) attends class along with students, is trained in the most effective learning and study strategies, operates as a model student and relays tips on the most effective study skills, provides leadership structure to the study session, models critical thinking, and problem solving techniques, and empowers students to become independent learners.



Activities & Events

The Adelante Program provides students with different activities and events that will assist them in transferring to a four year university. Activities consist of visits to various university campuses, including University of California Berkeley and the University of California, Santa Barbara. Other activities include educational field trips, college fairs as well as workshops on transferring and scholarship applications.



For more information on the Adelante First Year Experience Program at East Los Angeles College:

Dr. Viviana Castellón, Ph.D., Director
castelv@elac.edu

Jessica Peak, Counselor
jpeak.elac@gmail.com

Kirby Dominguez, Counselor
Kirby.elac@gmail.com

Telephone: (323) 415-5387

Fax: (323) 415-5392

Located: ELAC Main Campus B2-107

www.adelante.elac.edu